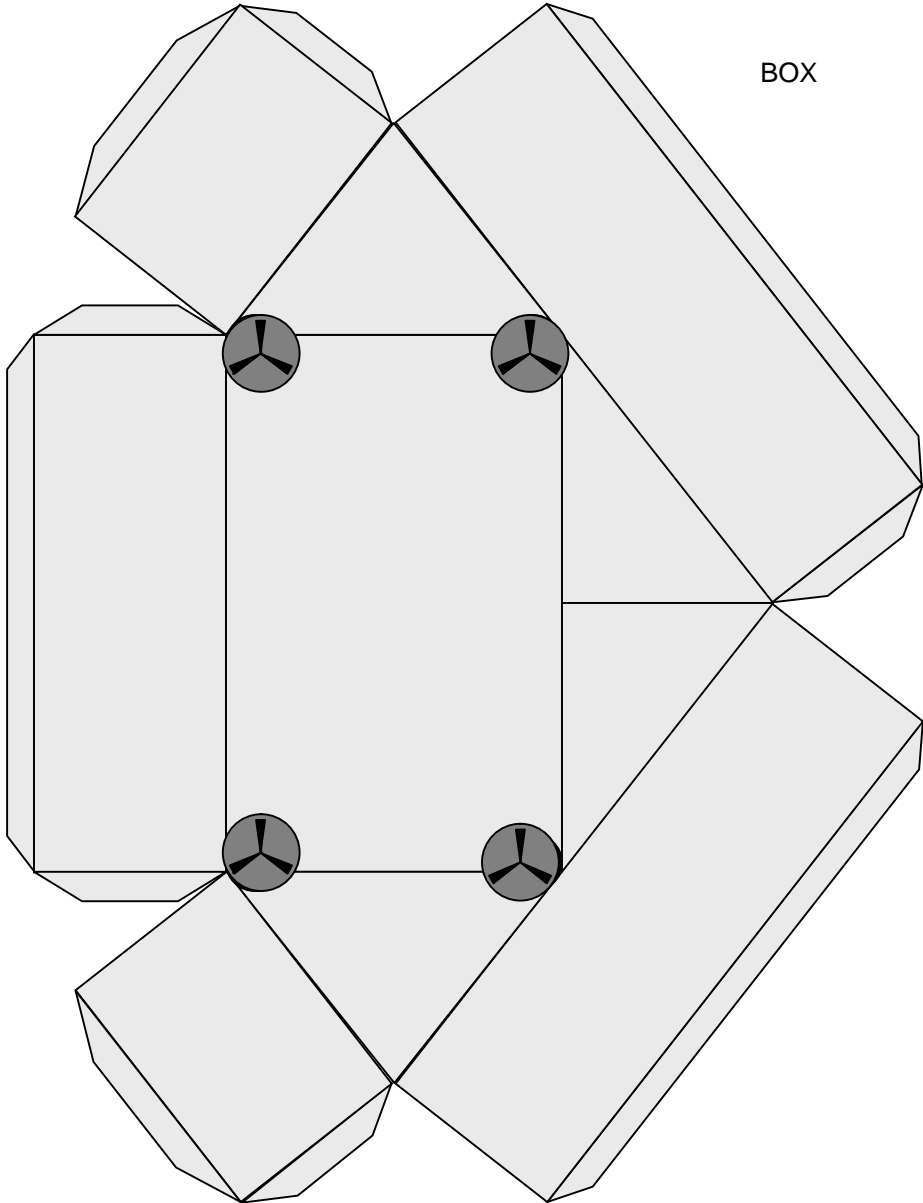
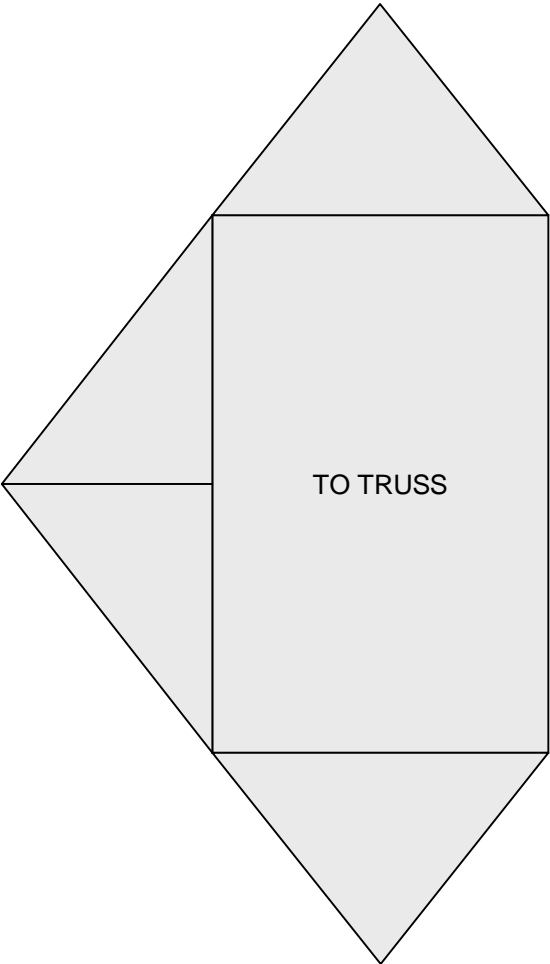


MOBILE TRANSPORTER/BASE

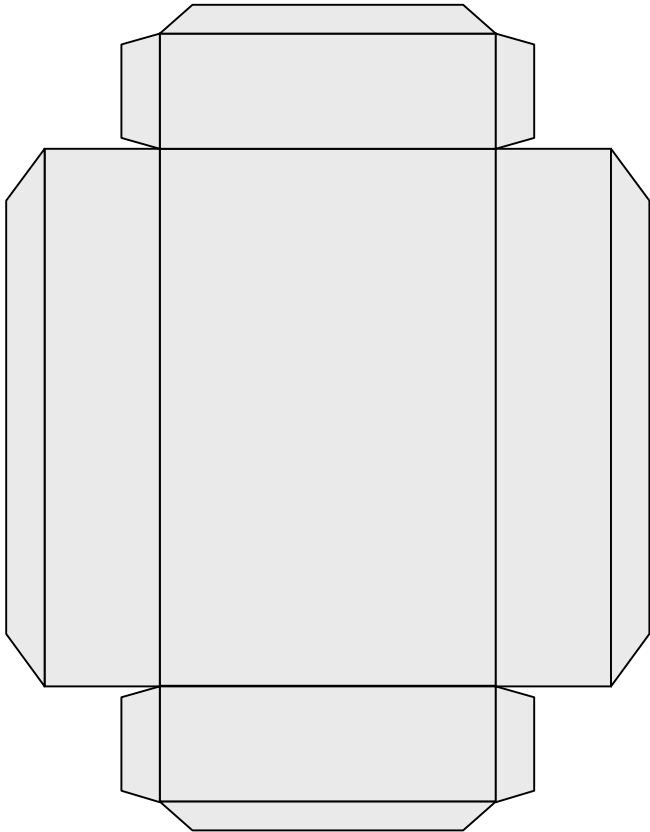
BOX



BOX BOTTOM

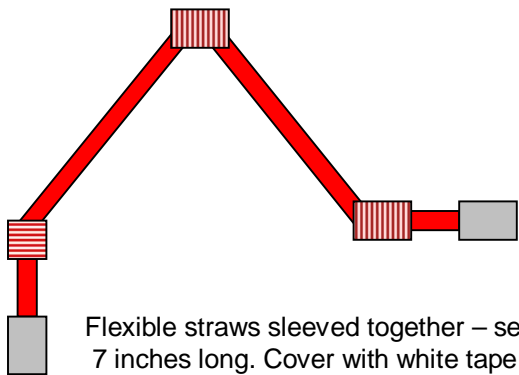


MOBILE TRANSPORTER/BASE



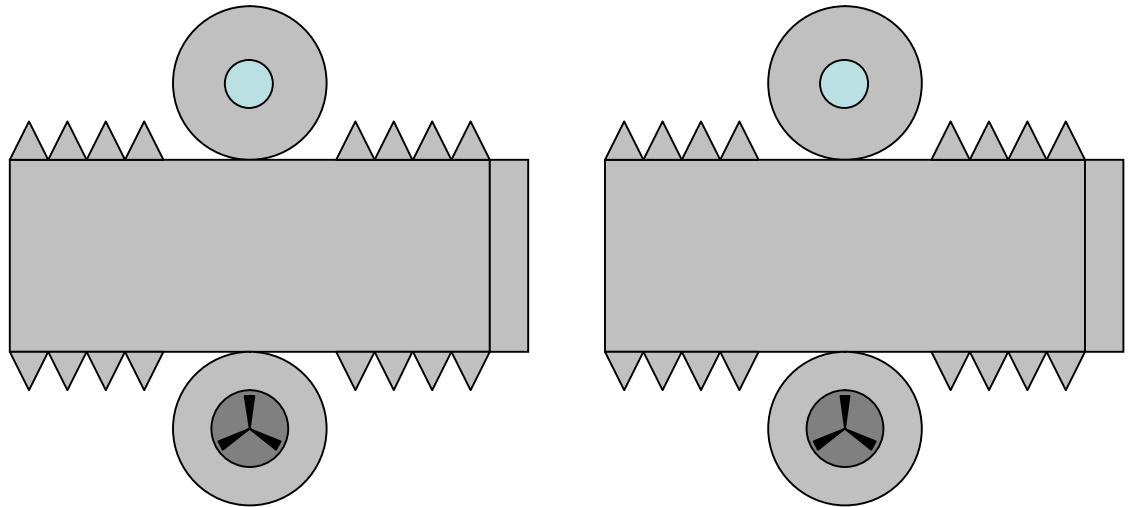
MOUNTING PLATFORM – GLUE TO BOX, THEN ATTACH TO TRUSS

BOX – MOUNT ON BOX BOTTOM

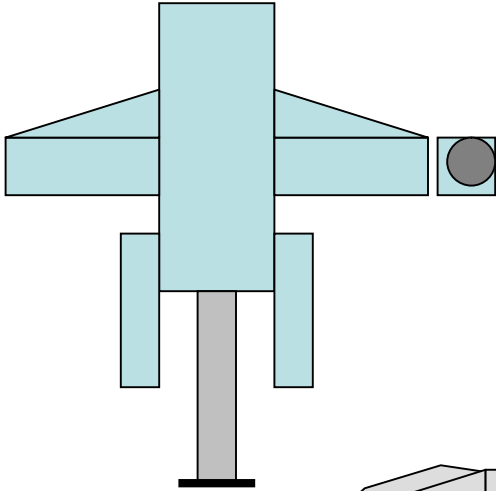


Flexible straws sleeved together – sections about 7 inches long. Cover with white tape or paint.

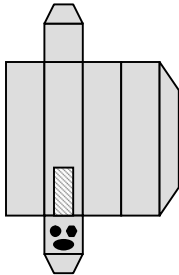
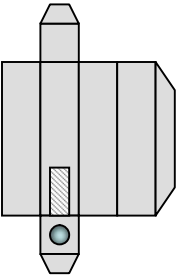
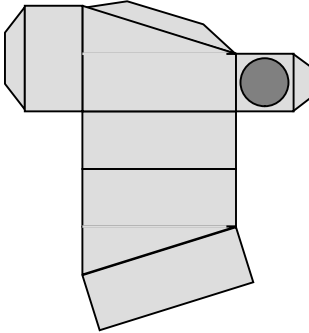
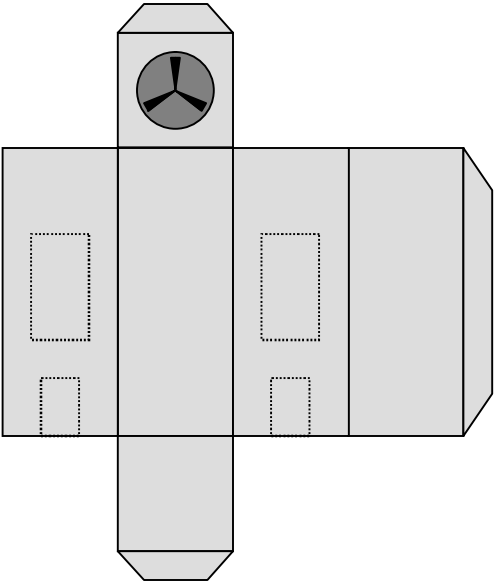
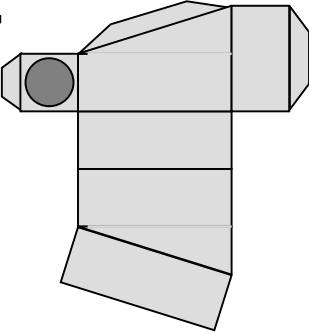
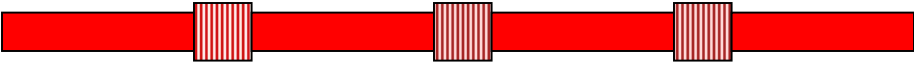
ROBOT (CANADARM) ARM END FITTINGS



CANADARM DEXTRE



3 JOINTS – 1" ARM SECTIONS

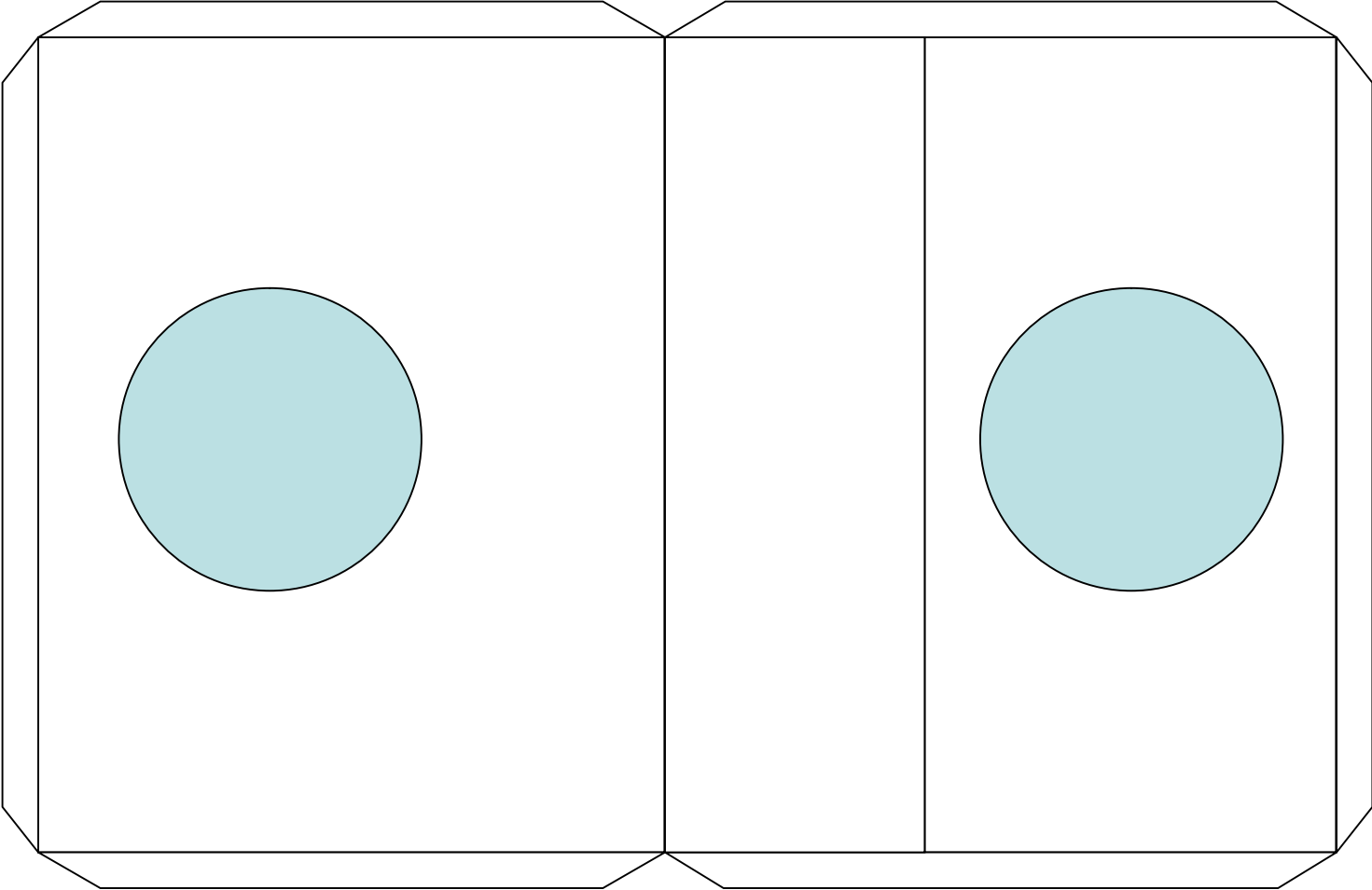


ROLL

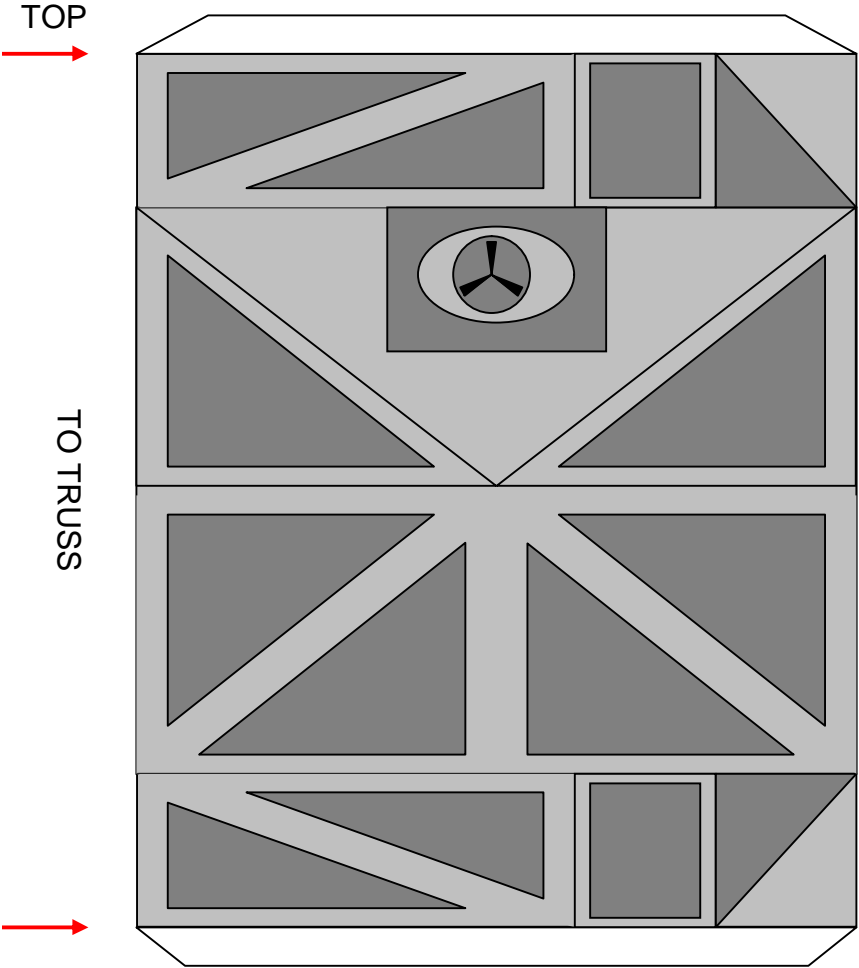
Z1 TRUSS - enlarged

TRUSS SIDE

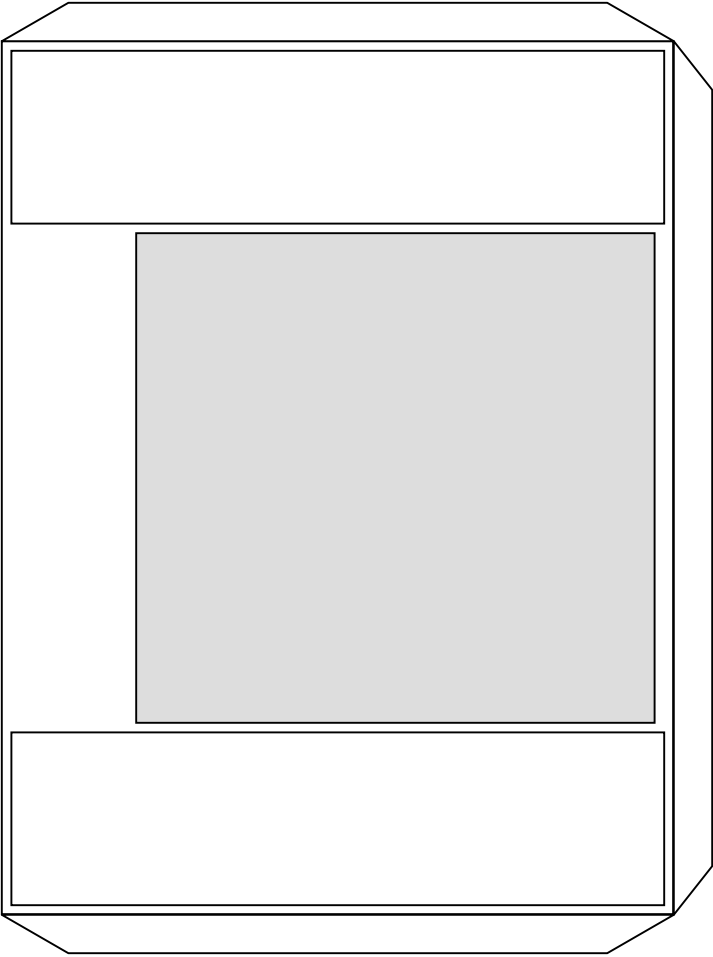
BOTTOM



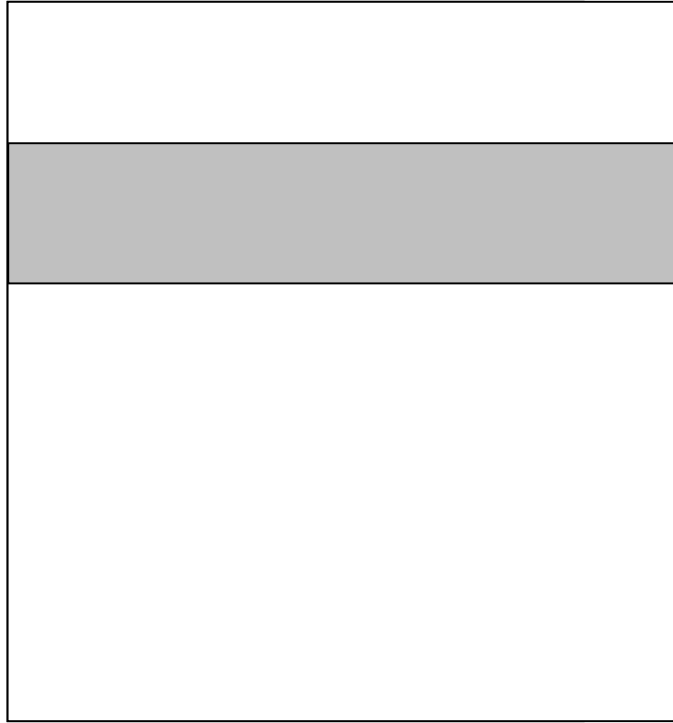
Z1 TRUSS -enlarged



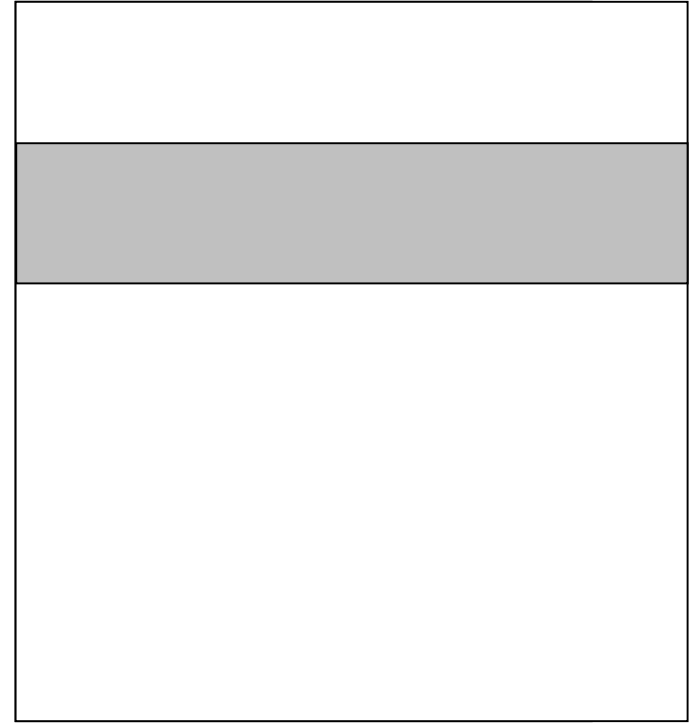
BACK - AWAY FROM TRUSS

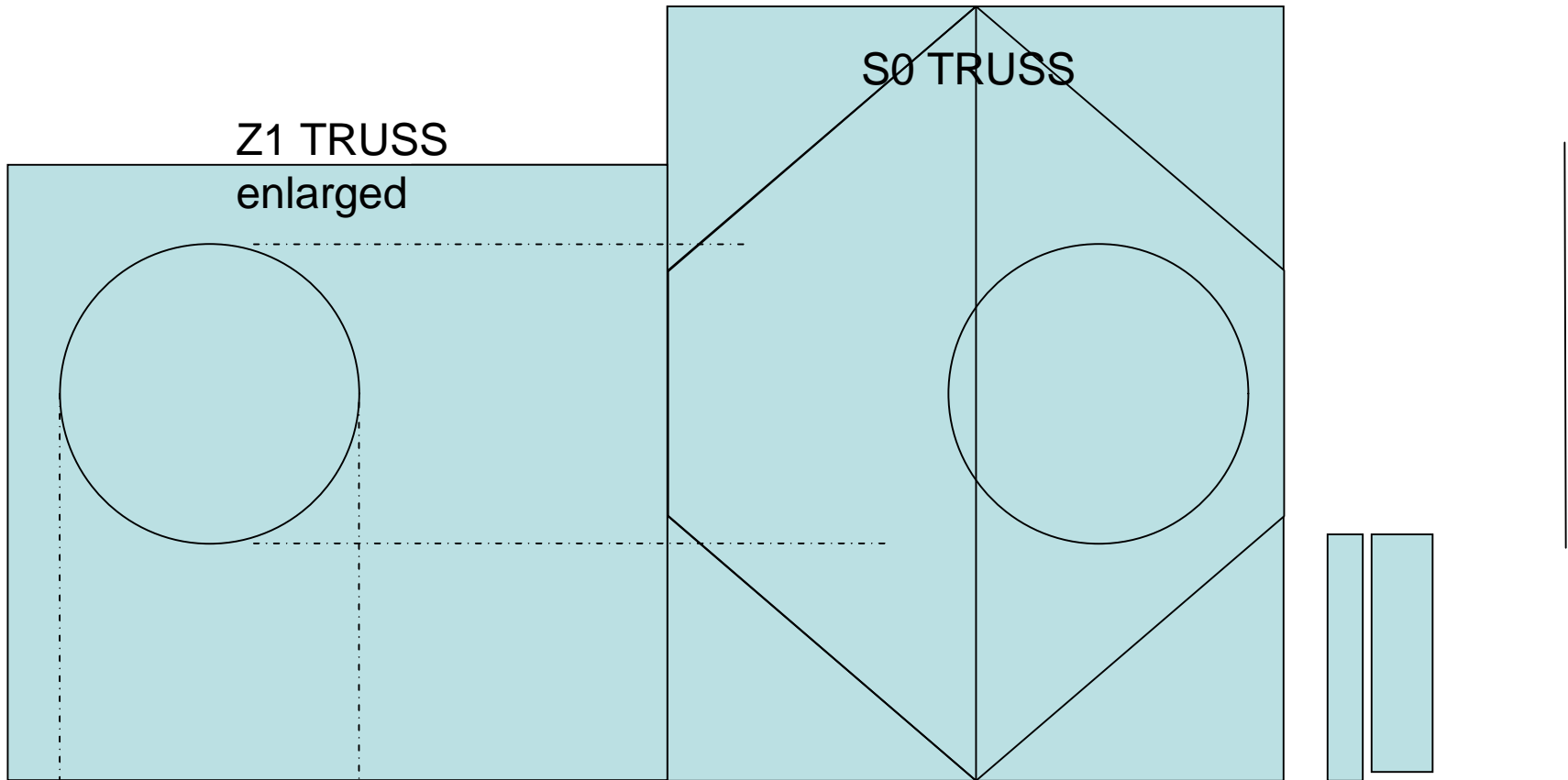


Z1 TRUSS
enlarged

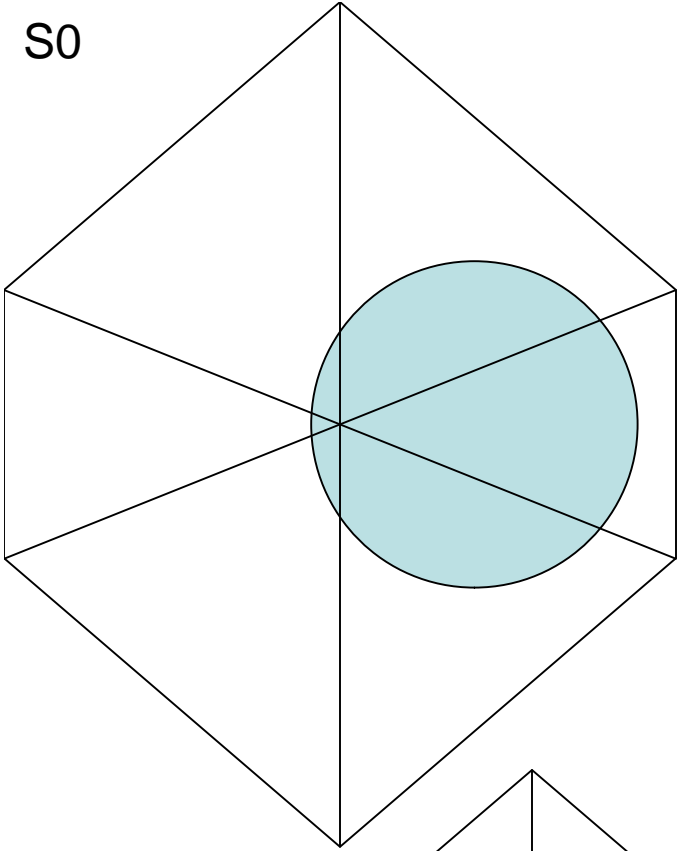


SIDES

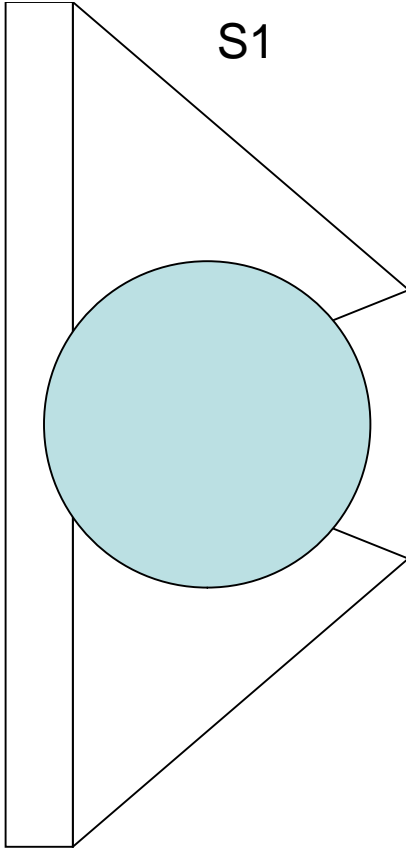




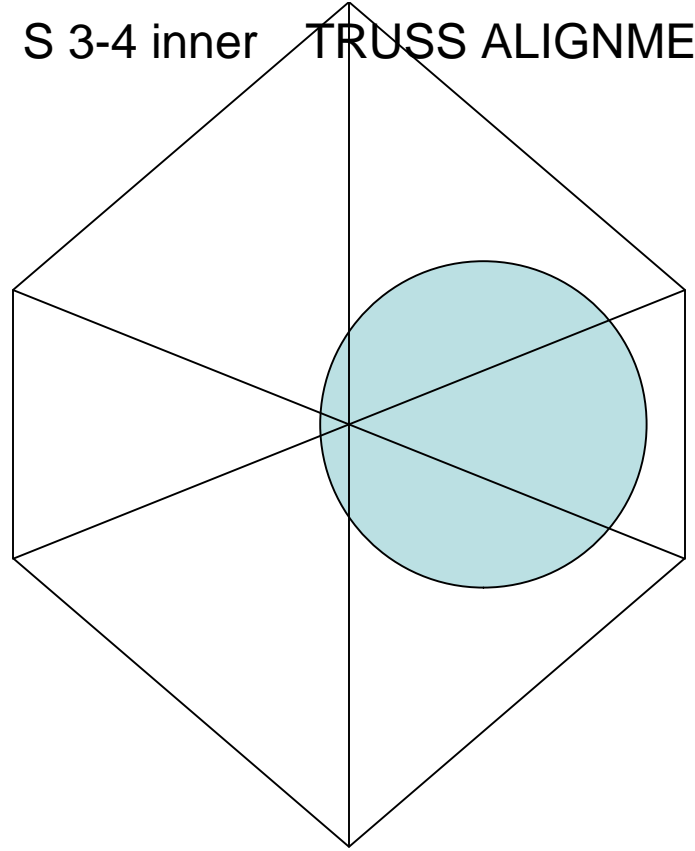
S0



S1

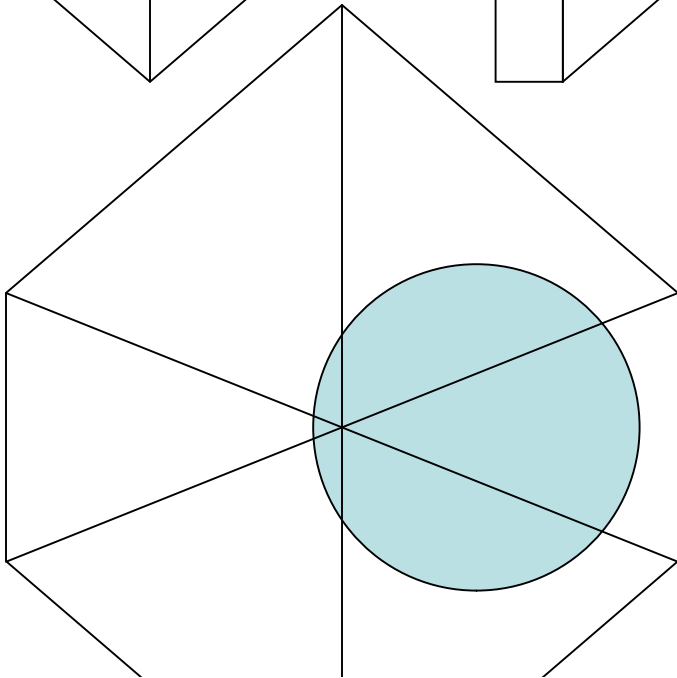


S 3-4 inner

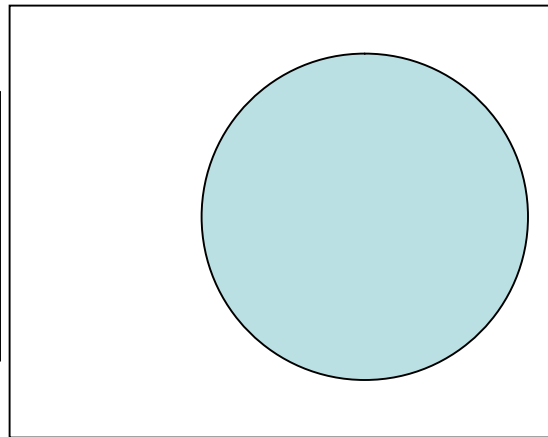


TRUSS ALIGNMENT

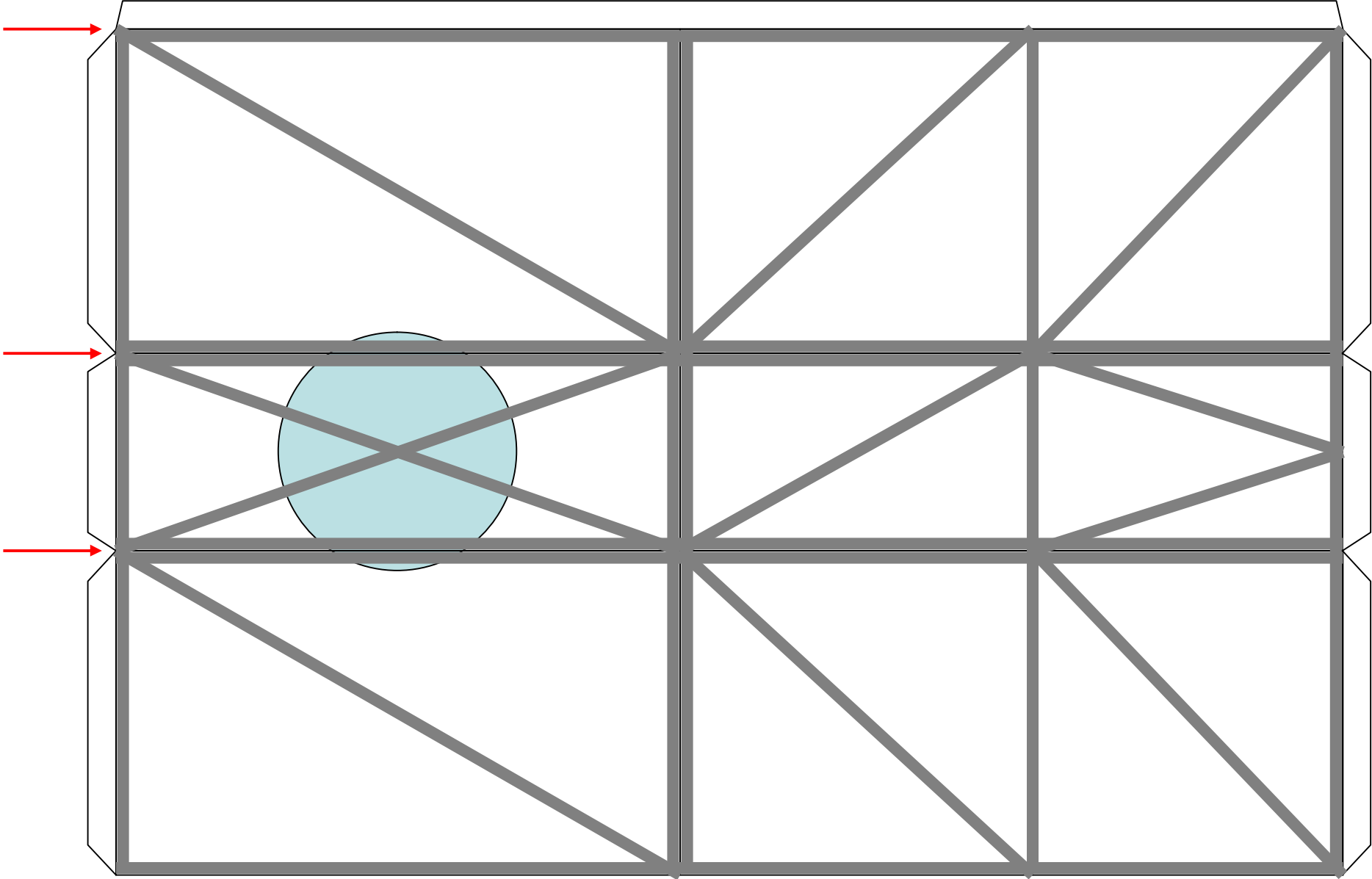
S 3-4 i



S 3-4 outer/S 5-6



S0 TRUSS
JEMM SIDE



S0 TRUSS
JEMM SIDE

